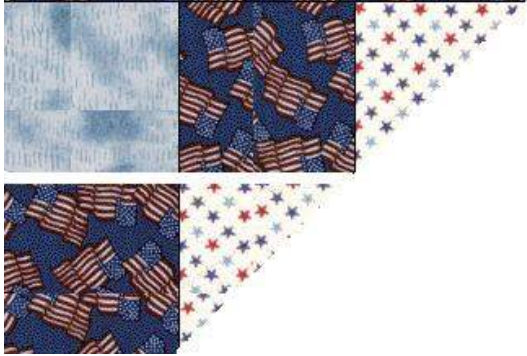


Clue #4

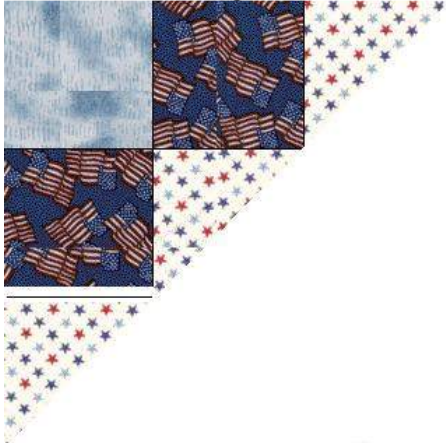
Cutting Instructions:

DARK BLUE: (5) 10 7/8" square - cut once on diagonal

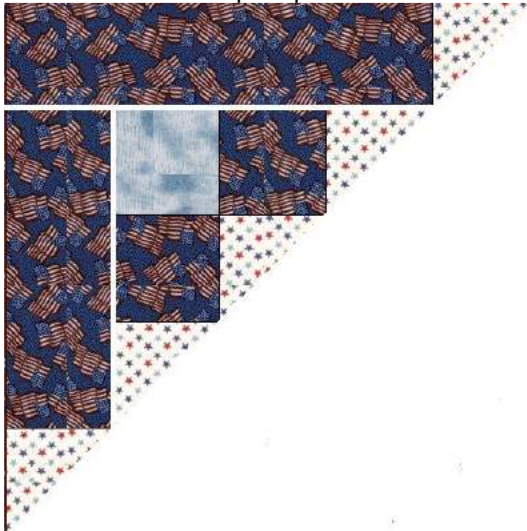
Assemble the unit below, using units from previous clues, being careful of block placement. Make 10



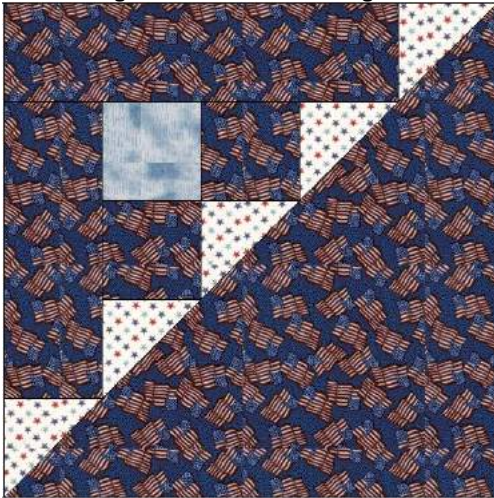
Sew a WHITE triangle to bottom of above unit, as shown. Make 10



Sew left side and top strips to above unit. Make 10



Sew a large DARK BLUE triangle to above unit, as shown:



Make 10

Sew (1) Blue/White Flying Geese unit and (2) Blue/White HST, as shown, being careful of block placement



Flying Geese Unit

HST

HST

Make 16

Cutting Instructions for Clue #5:

RED:.....(10) 2 1/2" x 10 1/2"
(10) 2 1/2" x 12 1/2"
(4) 1 1/2" x WOF

WHITE:...(10) 6" square - Draw a diagonal line on wrong side. Then draw another line 1/4" from 1st line. Next, draw another line 1/4" from that line. (If unsure, wait until illustration on Clue #6)