

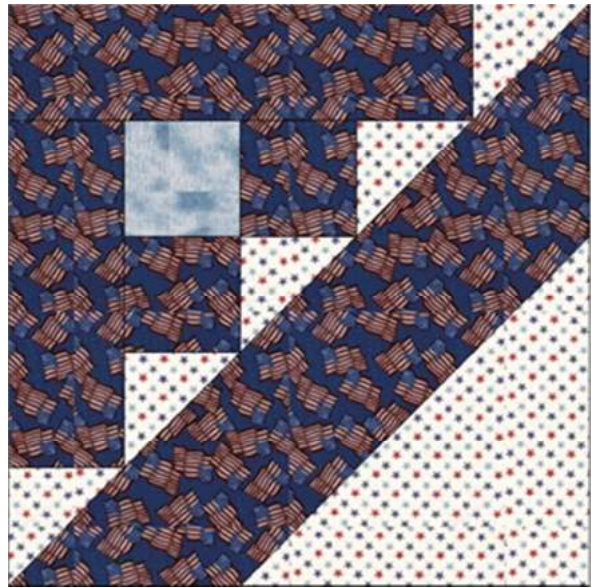
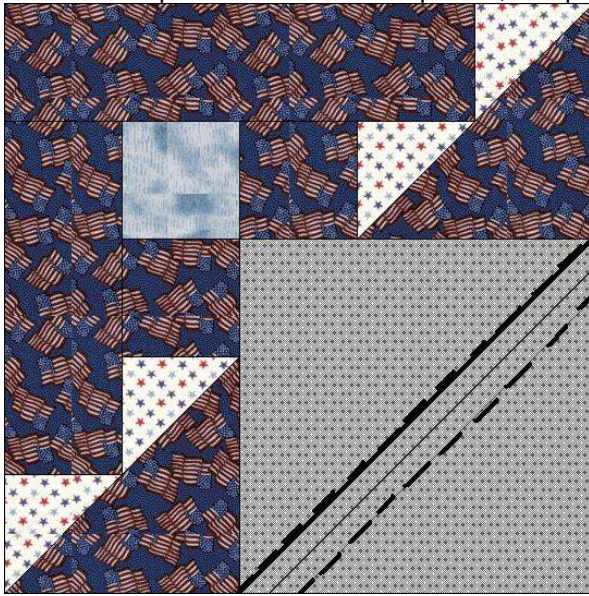
Clue #5

Cutting Instructions:

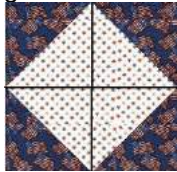
RED:.....(10) 2 1/2" x 10 1/2"
(10) 2 1/2" x 12 1/2"
(4) 1 1/2" x WOF

WHITE:...(10) 6" square - Draw a diagonal line on wrong side. Then draw another line 1/4" from 1st line. Next, draw another line 1/4" from that line. (see below)

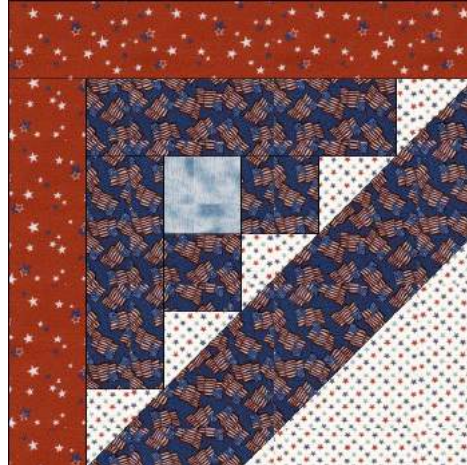
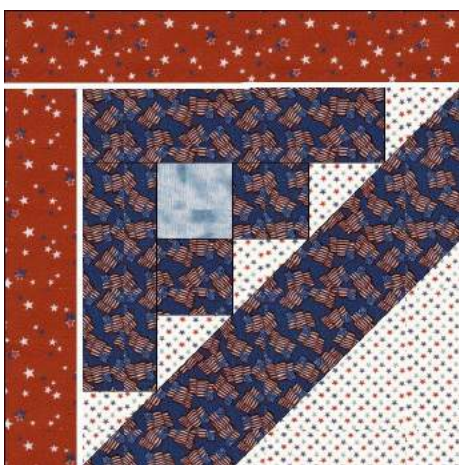
Place (1) 6" WHITE square on top of (1) Block from Clue #4, as shown. **Sew on 1st and 3rd drawn lines first.** Cut apart on middle line. Flip back, and press to blue. Make 10.



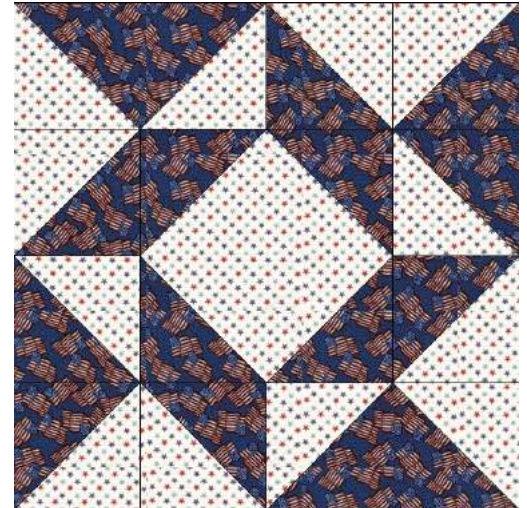
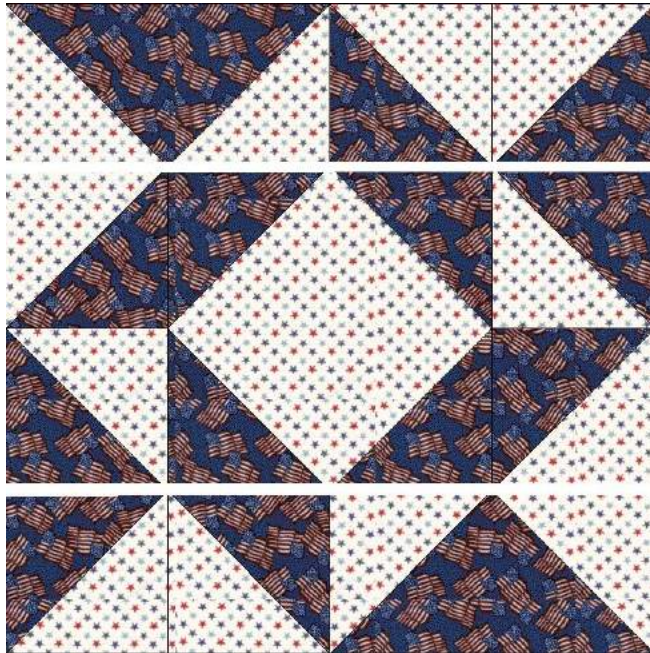
These new HST's will not be used in this project, but 4 sewed together with white in center area would make a great label!



Sew (1) 2 1/2" x 10 1/2" RED strip to left side of above block. Then sew (1) 2 1/2" x 12 1/2" strip to the top of new block, as shown: Make 10 **"Block A"** Your block should measure 12 1/2"



Next assemble "Block B" as shown below, being careful of top and bottom unit rotation:
 Make 8 "Block B". Your block should measure 12-1/2".



Sew (17) 4-patches together - rotating blocks until they look EXACTLY like shown:



Make 1 "LB unit"

Next, sew (1) 1 1/2" x 68" RED strip to LB unit, being careful of placement, as shown:

Sew (1) 1 1/2" x 68" RED strip to RB unit, as shown:



Again, sew (17) 4-patches together - rotating blocks in new formation until they look EXACTLY like shown:



Make 1 "RB unit"

Sew (1) 1 1/2" x 68" RED strip to RB unit, as shown:



This ends Clue #5