

LQG June 2019 Block-of-the-Month



Birds In The Air

(that landed and are now standing around??)

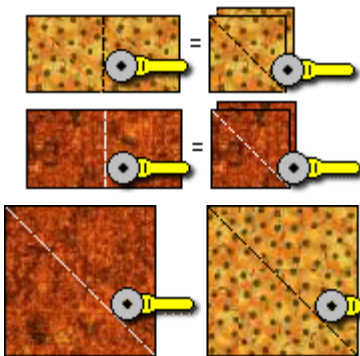
This makes a 12" block!

PLEASE NOTE: SEE BOTTOM OF PAGE 2 FOR COLORS WE ARE USING FOR THIS JUNE BLOCK-OF-THE-MONTH



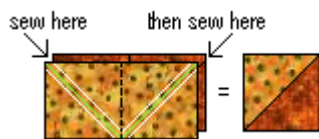
Please abide by the [Terms and Conditions of use!](#) :o)

** Preparing the Pieces and Sewing the Block **

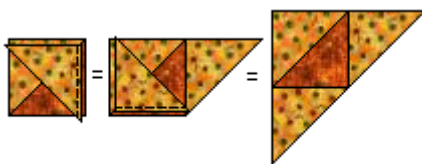


Start by cutting one 3-7/8" x 7-3/4" strip of each color into two 3-7/8" squares each. Then stack and cut them on the diagonal with a rotary cutter...

Next cut the large squares of each color on the diagonal...



Then speed piece the remaining 3-7/8" x 7-3/4" strip of each color, by stacking them right sides together with all edges aligned. Mark the 3-7/8" square line, mark the diagonals in the direction shown as well, then sew 1/4" above and below the diagonal markings, pivoting at the 3-7/8" square line. Cut apart ON the marked diagonal, and cut apart on the square line also. This will give you four half squares. Trim to measure 3-1/2" if needed...

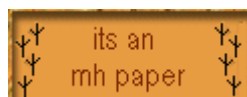


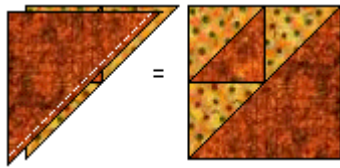
Sew a Color 1 small triangle to one side of a half square, referring to diagram for placement, using a scant 1/4" seam, and pressing seam allowances towards square. Sew another Color 1 small triangle to the adjacent side as shown, pressing seam allowance towards triangle. Make two of these units. Then make two more with the colors reversed.

©Nov1999MHohn

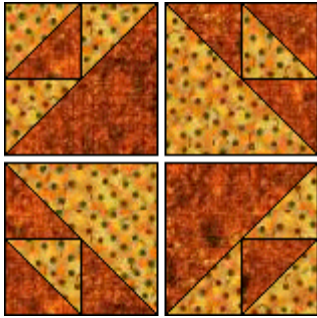
<http://www.quilterscache.com>

Traditional Block

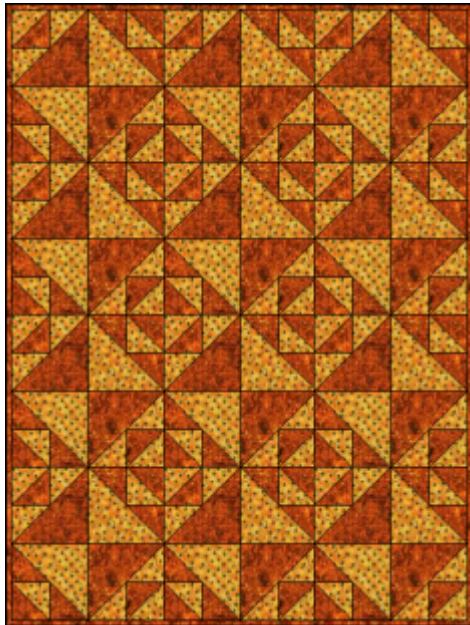




Next sew a large Color 2 triangle to the unit shown above, pressing seam allowance towards the Color 2 triangle. Make two of these. Sew a Color 1 large triangle to each of the two reverse color units you made. This is one Birds in the Air block!



Sew four blocks together to make a 12" grouping! Simple!! :o)



Here's an idea of what your quilt would look like! I have also seen this one done as a patchwork quilt, and a wonderful light and dark pattern emerges that way. To do one as a patchwork, just remember to have light fabrics pointing in SW to NE and dark fabrics pointing in SE to NW...

Have fun with this one!! :o)

and as always...

HAPPY QUILTING!

Marcia :o)

**** Supplies List ****--this makes FOUR 6" blocks!

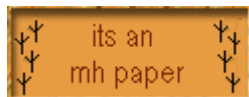
Color 1 Color 1 needs: two 3-7/8" x 7-3/4" strips AND one 6-7/8" square

Color 2 Color 2 needs: two 3- 7/8" x 7- 3/4" strips AND one 6-7/8" square

©Nov1999MHohn

<http://www.quilterscache.com>

Traditional Block



*****USE THESE COLORS*****

Color 1: Sky Blue Blender

Color 2: Any Bird or Bird Colored Print (to contrast with Color 1)

